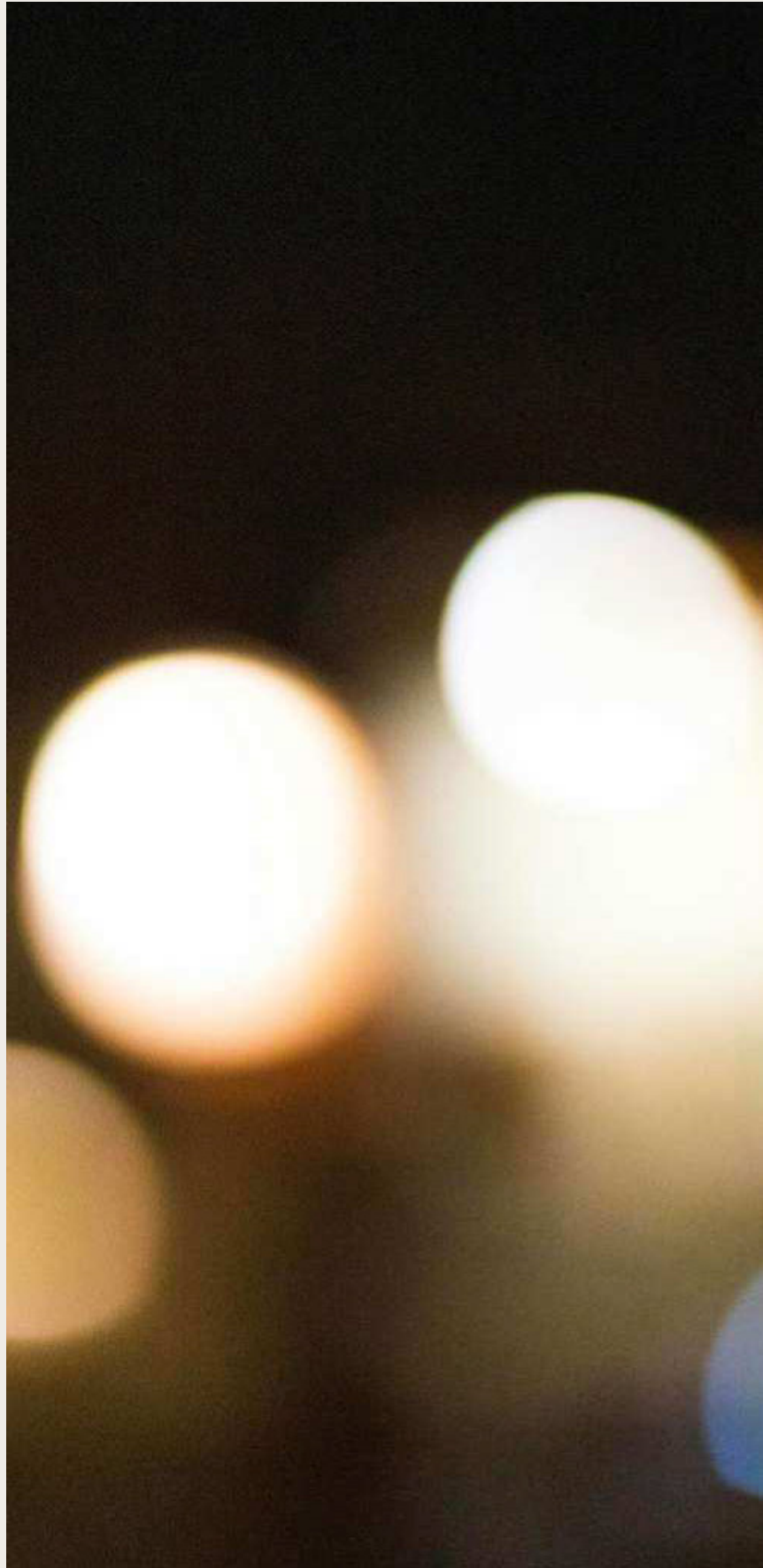




BINGHATTI SKYHALL

FLOOR PLAN BROCHURE





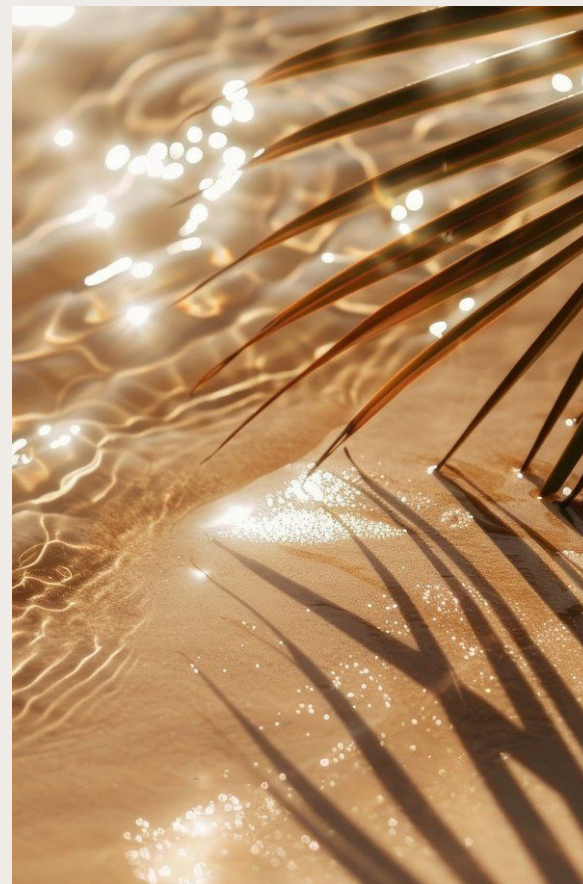
A Haven Above the Horizon

Skyhall offers a sanctuary amidst the city's vibrant energy. Each residence is a haven of tranquility, designed to inspire and rejuvenate.

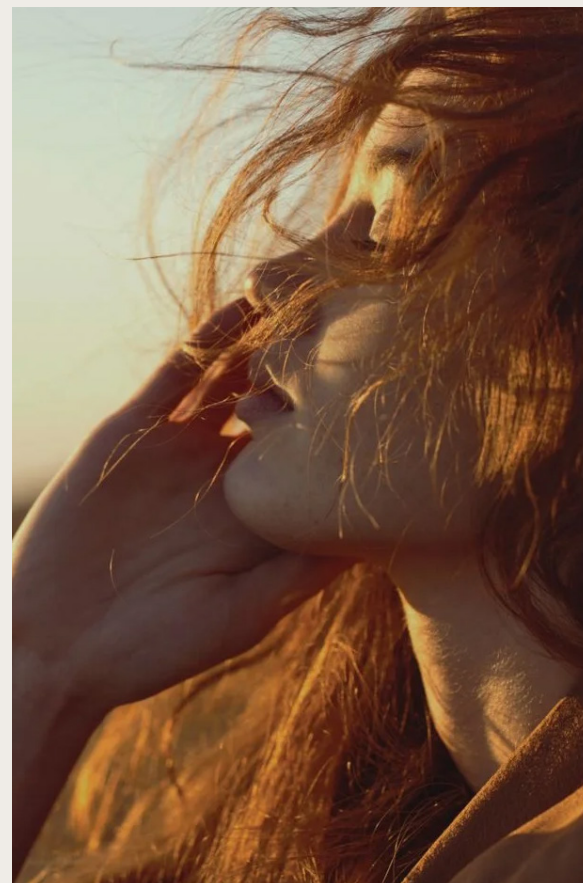
Sculpted by Light, Defined by Vision

Skyhall's striking silhouette graces the Dubai skyline with its curvilinear form and captivating interplay of light and shadow. A beacon of bold design, it invites you to step inside and discover a world of infinite potential.





For Those Who Seek More



Skyhall is an invitation to those who dare to live above the horizon, within a vision of their own making. It's a place where ambition finds its address, and the future unfolds with every breathtaking sunrise.



Discover a range of thoughtfully designed floor plans to suit your individual needs and lifestyle. From studios to one-bedroom apartments, Skyhall offers a space for every discerning individual.

Floor Plans

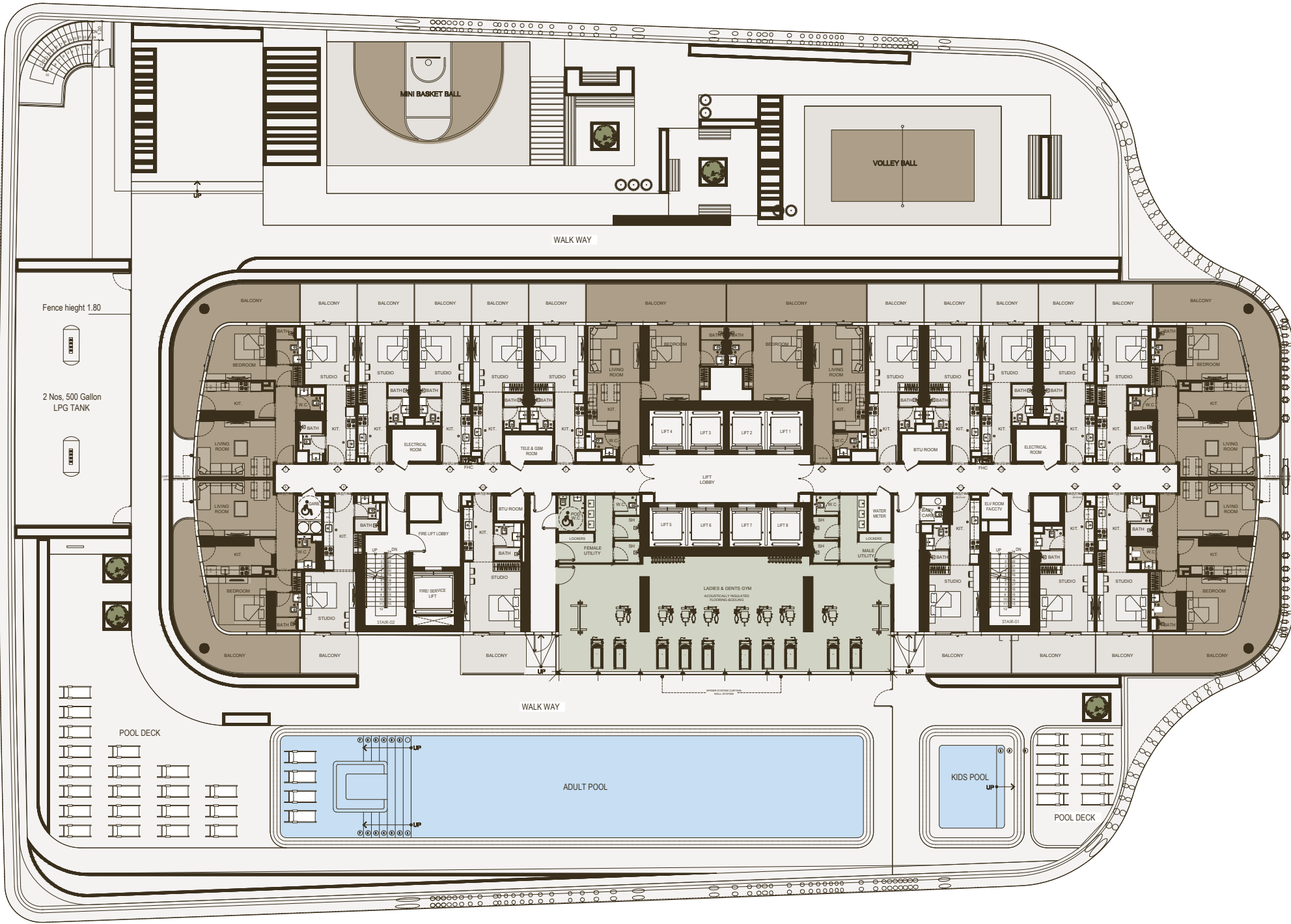




Where Vision Becomes Reality

Step into residences that redefine the living you aspire to. Expansive windows frame breathtaking views of the Dubai skyline, while meticulously curated interiors offer a sanctuary of refined elegance.

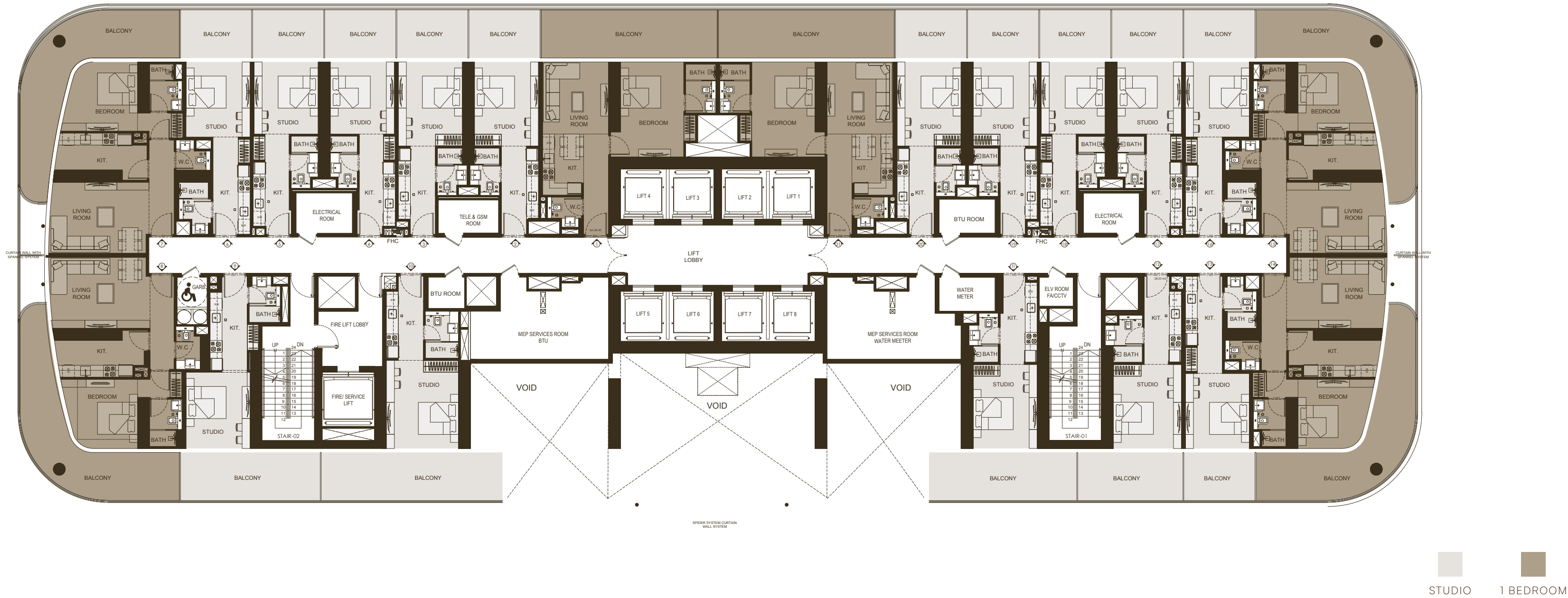
1ST FLOOR
TYPICAL FLOOR PLAN



Disclaimer: 1. All stated dimensions and services whether in relation to the building, common areas or individual units are subject to government and local authority approvals. Final dimensions and services will be stated in your sales and purchase agreement 2. All room dimensions are measured to structural elements and exclude wall finishes and construction tolerances. 3. All dimensions have been provided by our consultant architects. 4. All materials, dimensions and drawings are approximate. Information is subject to change without notice. 5. Actual suite area may vary from the stated area. Drawings are not to scale. The Developer reserves the right to make any revisions whatsoever including for aesthetic purposes.

6. Calculation of suite area is measured as the area bounded by the centre line of demising or partition walls separating one unit from another unit, the exterior face of all exterior walls, and the exterior face of the corridor wall enclosing the adjoining unit. 7. Calculation of balcony area is measured as the area bounded by the centre line of demising or partition walls separating one unit from another unit, the outmost face of the enclosing guard and the external face of the adjoining balcony. 8. The units are measured at typical floor in the building. Columns may vary in size depending on the floor level. 9. For each unit type, unit sizes and details might be different and your sales and purchase agreement will contain the actual size of each specific unit.

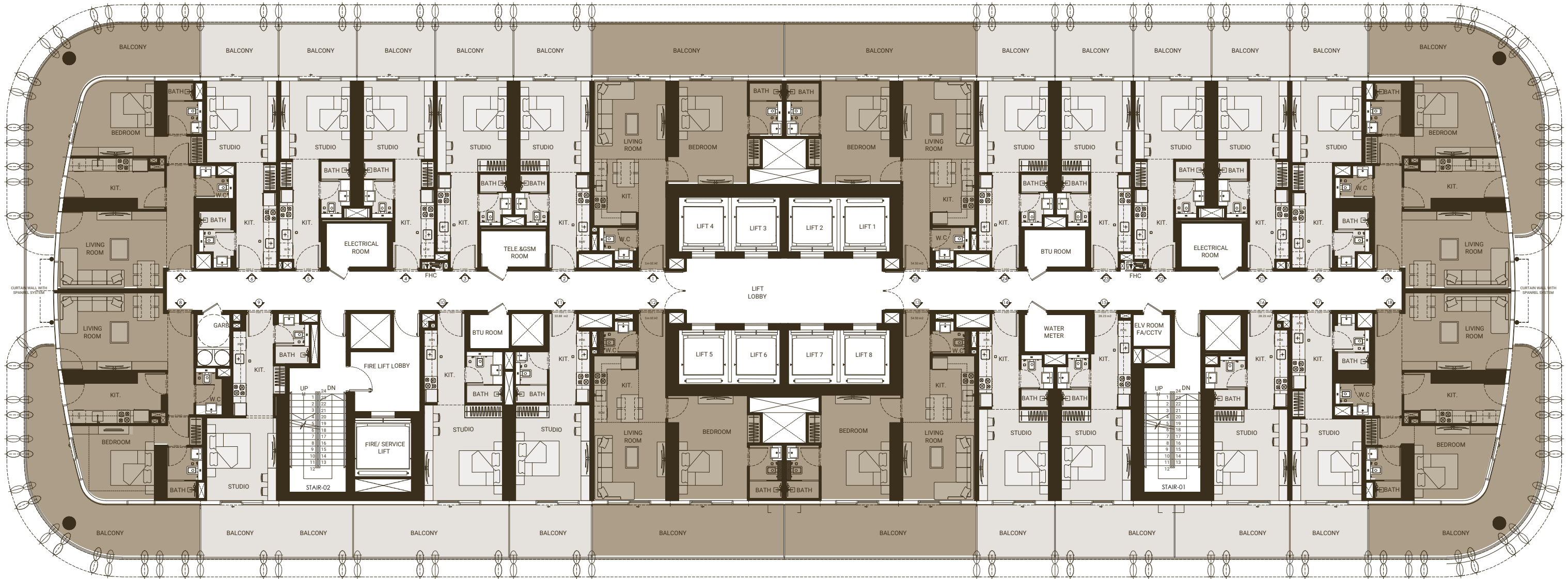
2ND FLOOR
TYPICAL FLOOR PLAN



Disclaimer: 1. All stated dimensions and services whether in relation to the building, common areas or individual units are subject to government and local authority approvals. Final dimensions and services will be stated in your sales and purchase agreement 2. All room dimensions are measured to structural elements and exclude wall finishes and construction tolerances. 3. All dimensions have been provided by our consultant architects. 4. All materials, dimensions and drawings are approximate. Information is subject to change without notice. 5. Actual suite area may vary from the stated area. Drawings are not to scale. The Developer reserves the right to make any revisions whatsoever including for aesthetic purposes.

6. Calculation of suite area is measured as the area bounded by the centre line of demising or partition walls separating one unit from another unit, the exterior face of all exterior walls, and the exterior face of the corridor wall enclosing the adjoining unit. 7. Calculation of balcony area is measured as the area bounded by the centre line of demising or partition walls separating one unit from another unit, the outmost face of the enclosing guard and the external face of the adjoining balcony. 8. The units are measured at typical floor in the building. Columns may vary in size depending on the floor level. 9. For each unit type, unit sizes and details might be different and your sales and purchase agreement will contain the actual size of each specific unit.

3RD - 29TH FLOOR
TYPICAL FLOOR PLAN



STUDIO 1 BEDROOM

Disclaimer: 1. All stated dimensions and services whether in relation to the building, common areas or individual units are subject to government and local authority approvals. Final dimensions and services will be stated in your sales and purchase agreement 2. All room dimensions are measured to structural elements and exclude wall finishes and construction tolerances. 3. All dimensions have been provided by our consultant architects. 4. All materials, dimensions and drawings are approximate. Information is subject to change without notice. 5. Actual suite area may vary from the stated area. Drawings are not to scale. The Developer reserves the right to make any revisions whatsoever including for aesthetic purposes.

6. Calculation of suite area is measured as the area bounded by the centre line of demising or partition walls separating one unit from another unit, the exterior face of all exterior walls, and the exterior face of the corridor wall enclosing the adjoining unit. 7. Calculation of balcony area is measured as the area bounded by the centre line of demising or partition walls separating one unit from another unit, the outmost face of the enclosing guard and the external face of the adjoining balcony. 8. The units are measured at typical floor in the building. Columns may vary in size depending on the floor level. 9. For each unit type, unit sizes and details might be different and your sales and purchase agreement will contain the actual size of each specific unit.

30TH FLOOR
TYPICAL FLOOR PLAN



Disclaimer: 1. All stated dimensions and services whether in relation to the building, common areas or individual units are subject to government and local authority approvals. Final dimensions and services will be stated in your sales and purchase agreement 2. All room dimensions are measured to structural elements and exclude wall finishes and construction tolerances. 3. All dimensions have been provided by our consultant architects. 4. All materials, dimensions and drawings are approximate. Information is subject to change without notice. 5. Actual suite area may vary from the stated area. Drawings are not to scale. The Developer reserves the right to make any revisions whatsoever including for aesthetic purposes.

6. Calculation of suite area is measured as the area bounded by the centre line of demising or partition walls separating one unit from another unit, the exterior face of all exterior walls, and the exterior face of the corridor wall enclosing the adjoining unit. 7. Calculation of balcony area is measured as the area bounded by the centre line of demising or partition walls separating one unit from another unit, the outmost face of the enclosing guard and the external face of the adjoining balcony. 8. The units are measured at typical floor in the building. Columns may vary in size depending on the floor level. 9. For each unit type, unit sizes and details might be different and your sales and purchase agreement will contain the actual size of each specific unit.

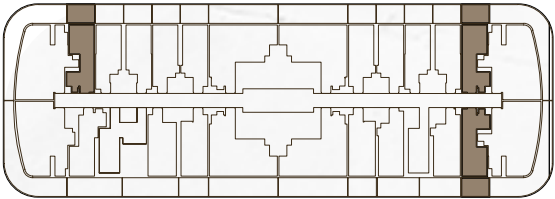
Crafted for a Life at the Forefront

Skyhall is a testament to Binghatti's unwavering commitment to quality and craftsmanship. Each residence is designed to inspire and empower, providing the perfect foundation for a life lived at the forefront.



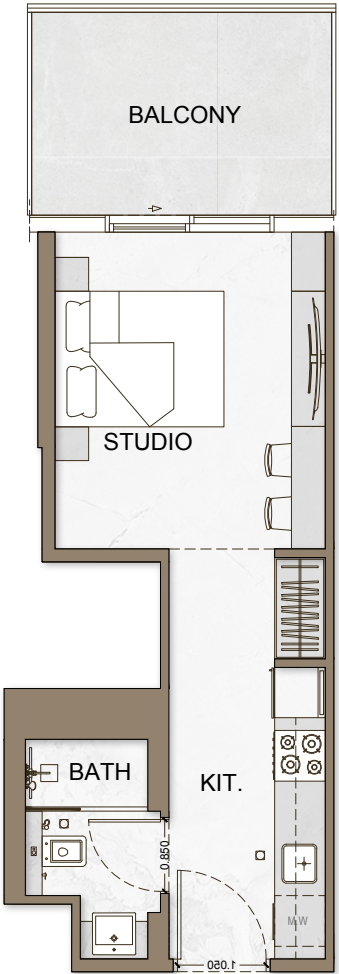
STUDIO

TYPE - 1



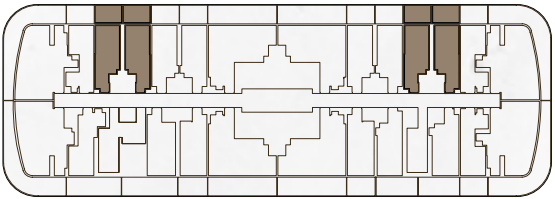
AREA	SQ.M	SQ.FT
SUITE AREA	27.79 m²	299 ft²
BALCONY AREA	9.00 m²	97 ft²
TOTAL UNIT AREA	36.79 m²	396 ft²

FLAT DESIGN COMPONENTS		
BATH		4 m²
STUDIO		14 m²
KITCHEN		7 m²



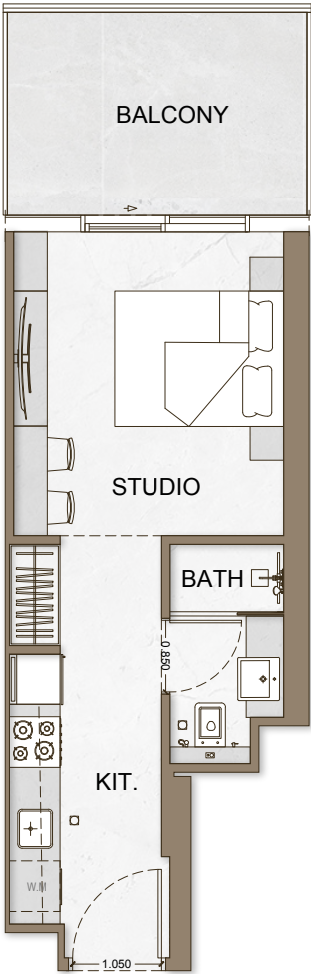
STUDIO

TYPE - 2



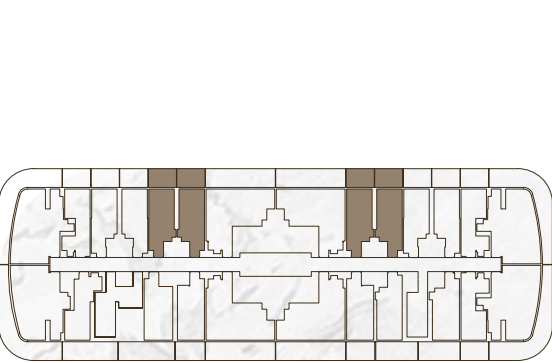
AREA	SQ.M	SQ.FT
SUITE AREA	27.71 m²	298 ft²
BALCONY AREA	9.01 m²	97 ft²
TOTAL UNIT AREA	36.72 m²	395 ft²

FLAT DESIGN COMPONENTS		
MASTER BATH		3 m²
MASTER BEDROOM		14 m²
LIVING & DINING		7 m²



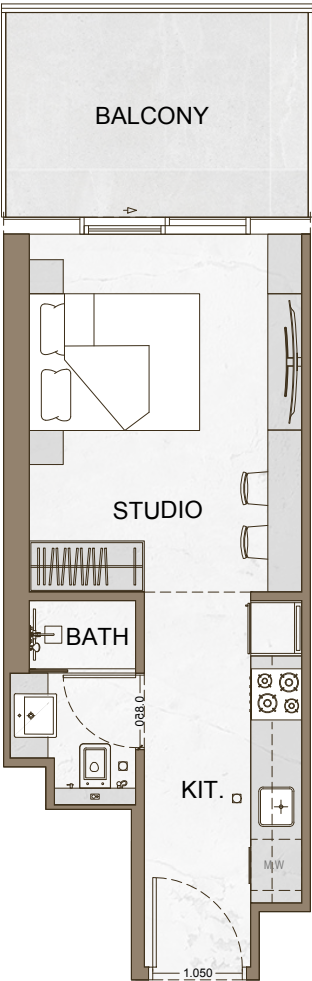
STUDIO

TYPE - 3



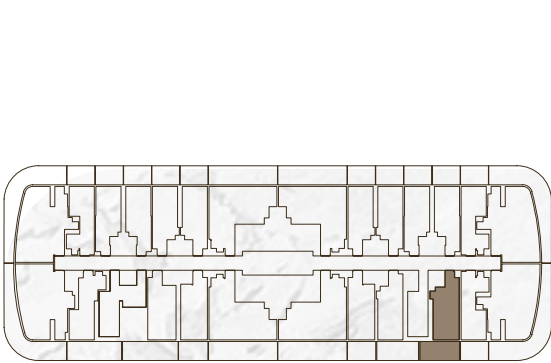
AREA	SQ.M	SQ.FT
SUITE AREA	27.92 m²	301 ft²
BALCONY AREA	9.00 m²	97 ft²
TOTAL UNIT AREA	36.92 m²	397 ft²

FLAT DESIGN COMPONENTS		
BATH		3 m²
STUDIO		13 m²
KITCHEN		8 m²



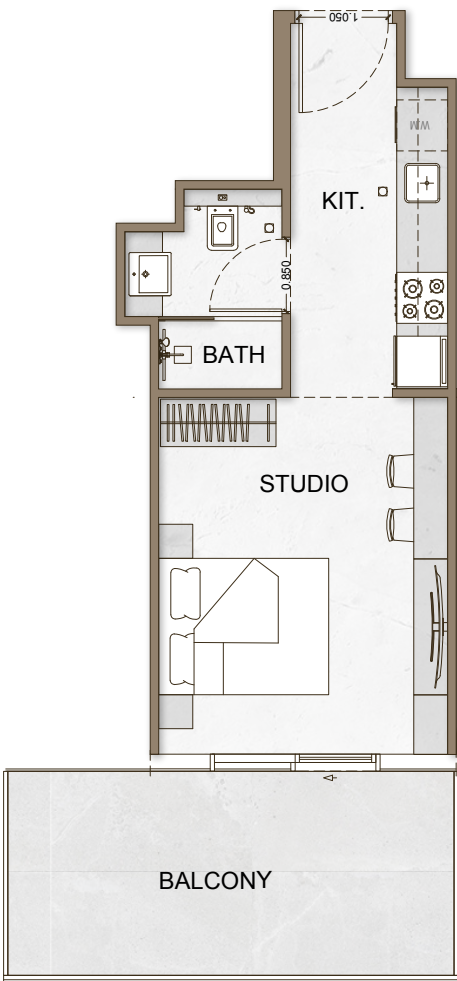
STUDIO

TYPE - 4



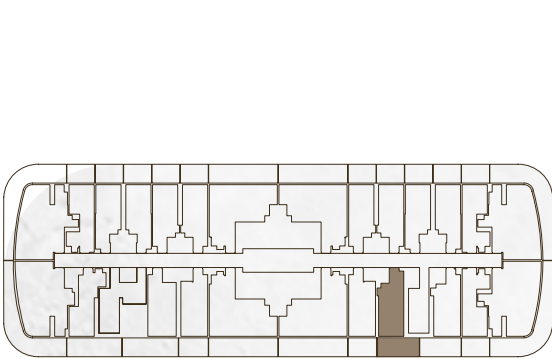
AREA	SQ.M	SQ.FT
SUITE AREA	29.69 m²	320 ft²
BALCONY AREA	13.78 m²	148 ft²
TOTAL UNIT AREA	43.47 m²	468 ft²

FLAT DESIGN COMPONENTS		
MASTER BATH		4 m²
MASTER BEDROOM		14 m²
LIVING & DINING		8 m²



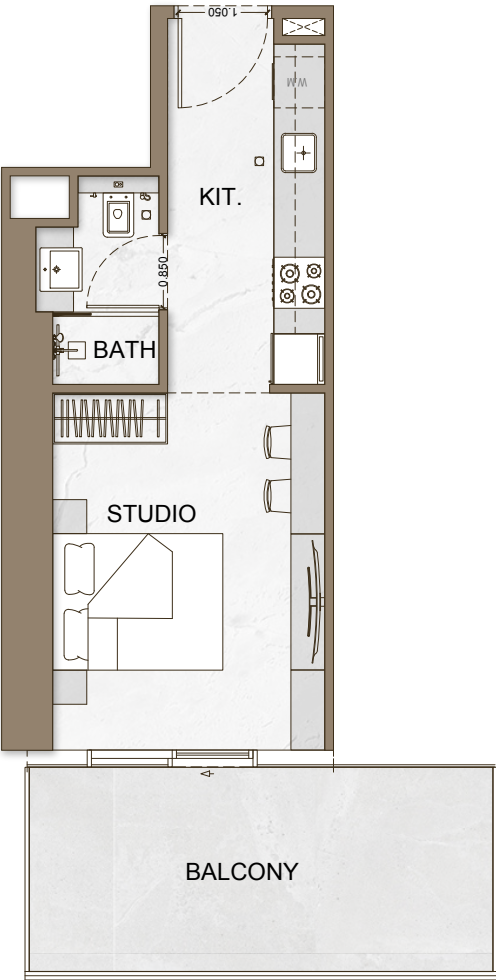
STUDIO

TYPE - 5



AREA	SQ.M	SQ.FT
SUITE AREA	29.64 m²	319 ft²
BALCONY AREA	14.24 m²	153 ft²
TOTAL UNIT AREA	43.88 m²	472 ft²

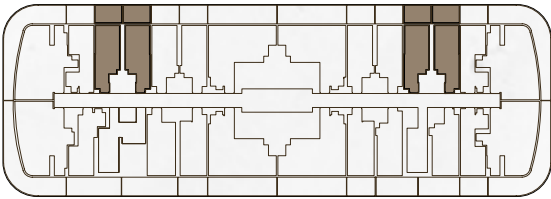
FLAT DESIGN COMPONENTS		
BATH		3 m²
STUDIO		13 m²
KITCHEN		8 m²



Disclaimer: 1. All stated dimensions and services whether in relation to the building, common areas or individual units are subject to government and local authority approvals. Final dimensions and services will be stated in your sales and purchase agreement 2. All room dimensions are measured to structural elements and exclude wall finishes and construction tolerances. 3. All dimensions have been provided by our consultant architects. 4. All materials, dimensions and drawings are approximate. Information is subject to change without notice. 5. Actual suite area may vary from the stated area. Drawings are not to scale. The Developer reserves the right to make any revisions whatsoever including for aesthetic purposes.

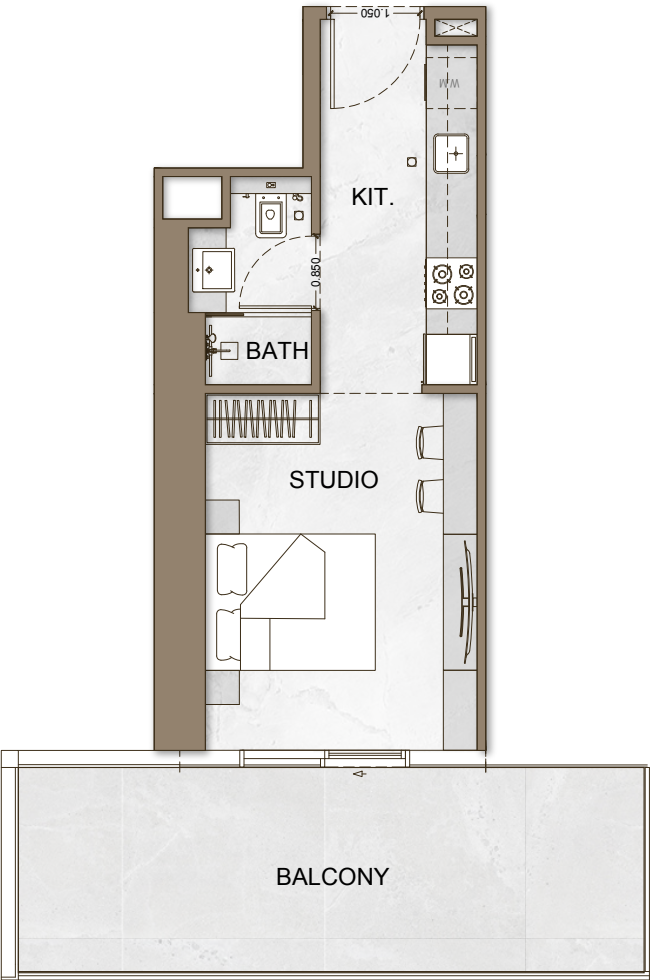
STUDIO

TYPE - 6



AREA	SQ.M	SQ.FT
SUITE AREA	27.71 m²	298 ft²
BALCONY AREA	9.01 m²	97 ft²
TOTAL UNIT AREA	36.72 m²	395 ft²

FLAT DESIGN COMPONENTS		
MASTER BATH		4 m²
MASTER BEDROOM		14 m²
LIVING & DINING		7 m²



6. Calculation of suite area is measured as the area bounded by the centre line of demising or partition walls separating one unit from another unit, the exterior face of all exterior walls, and the exterior face of the corridor wall enclosing the adjoining unit. 7. Calculation of balcony area is measured as the area bounded by the centre line of demising or partition walls separating one unit from another unit, the outmost face of the enclosing guard and the external face of the adjoining balcony. 8. The units are measured at typical floor in the building. Columns may vary in size depending on the floor level. 9. For each unit type, unit sizes and details might be different and your sales and purchase agreement will contain the actual size of each specific unit.

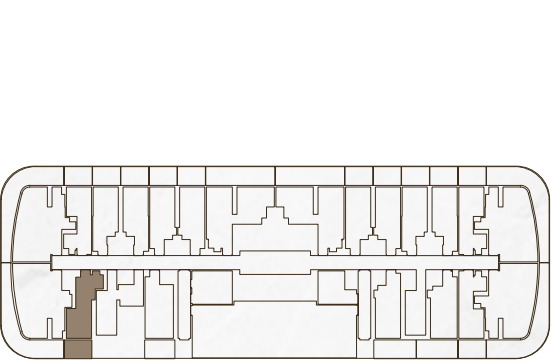
A Canvas of Possibilities

Skyhall's interiors are a composite of refined elegance. A carefully curated palette of subtle hues and rich textures creates an atmosphere of understated luxury, allowing your personal style to shine.



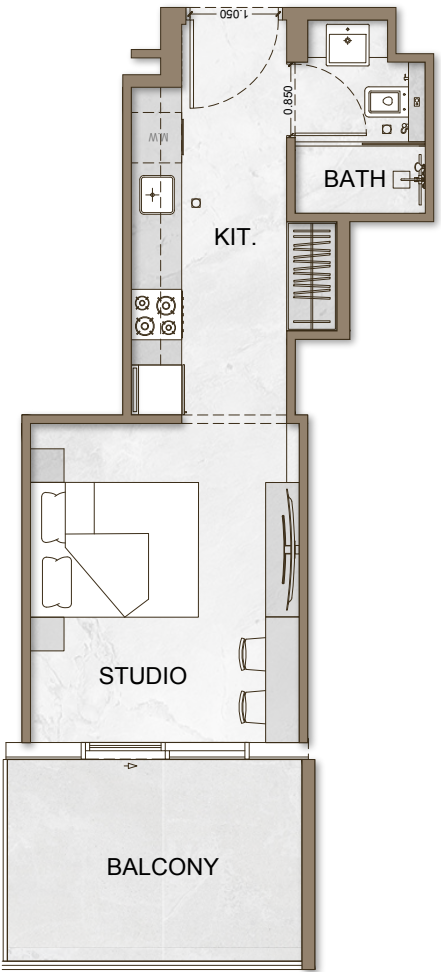
STUDIO

TYPE - 7



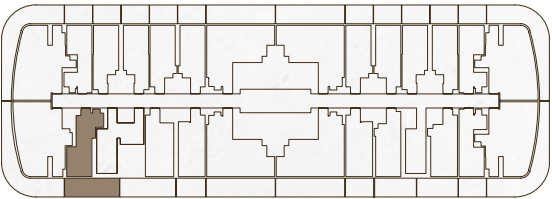
AREA	SQ.M	SQ.FT
SUITE AREA	28.88 m²	311 ft²
BALCONY AREA	9.04 m²	97 ft²
TOTAL UNIT AREA	37.92 m²	408 ft²

FLAT DESIGN COMPONENTS		
BATH		3 m²
STUDIO		12 m²
KITCHEN		9 m²



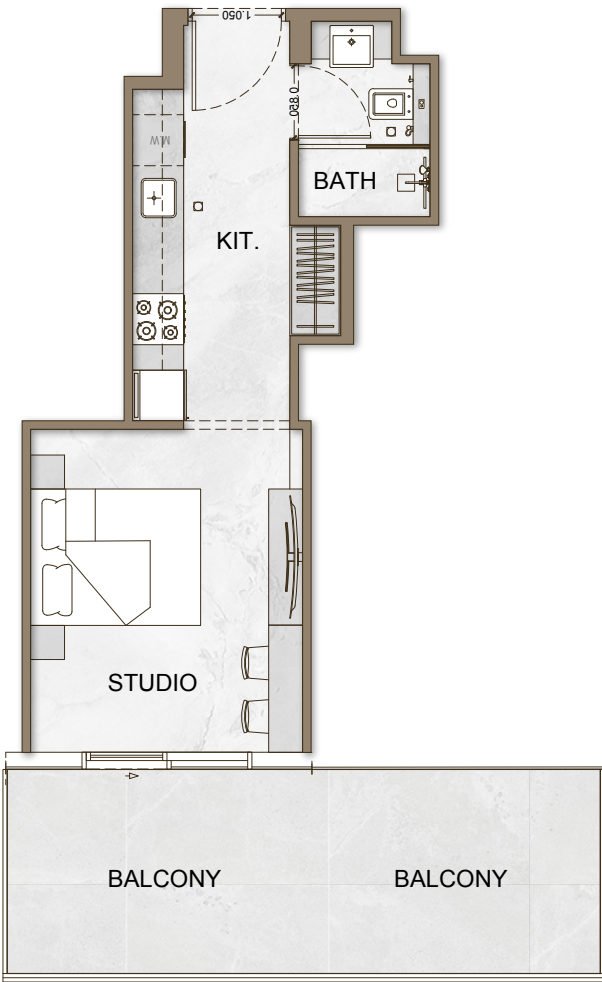
STUDIO

TYPE - 8



AREA	SQ.M	SQ.FT
SUITE AREA	28.88 m²	311 ft²
BALCONY AREA	17.46 m²	188 ft²
TOTAL UNIT AREA	46.34 m²	499 ft²

FLAT DESIGN COMPONENTS		
MASTER BATH		3 m²
MASTER BEDROOM		12 m²
LIVING & DINING		9 m²

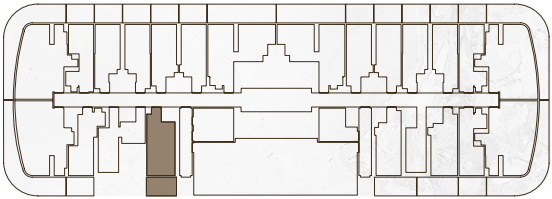


Disclaimer: 1. All stated dimensions and services whether in relation to the building, common areas or individual units are subject to government and local authority approvals. Final dimensions and services will be stated in your sales and purchase agreement 2. All room dimensions are measured to structural elements and exclude wall finishes and construction tolerances. 3. All dimensions have been provided by our consultant architects. 4. All materials, dimensions and drawings are approximate. Information is subject to change without notice. 5. Actual suite area may vary from the stated area. Drawings are not to scale. The Developer reserves the right to make any revisions whatsoever including for aesthetic purposes.

6. Calculation of suite area is measured as the area bounded by the centre line of demising or partition walls separating one unit from another unit, the exterior face of all exterior walls, and the exterior face of the corridor wall enclosing the adjoining unit. 7. Calculation of balcony area is measured as the area bounded by the centre line of demising or partition walls separating one unit from another unit, the outmost face of the enclosing guard and the external face of the adjoining balcony. 8. The units are measured at typical floor in the building. Columns may vary in size depending on the floor level. 9. For each unit type, unit sizes and details might be different and your sales and purchase agreement will contain the actual size of each specific unit.

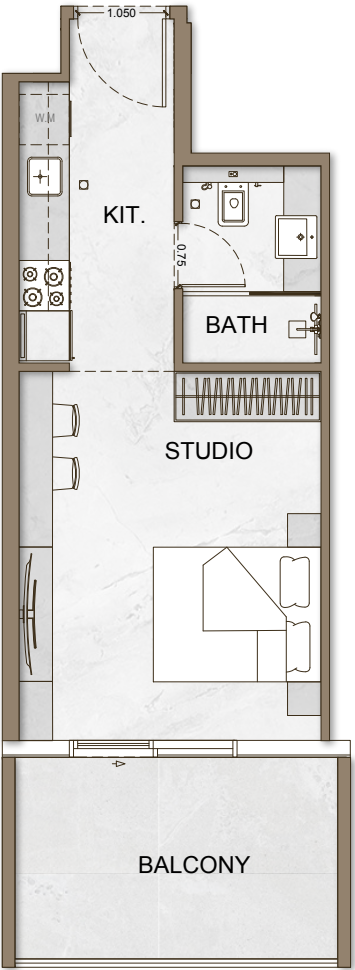
STUDIO

TYPE - 9



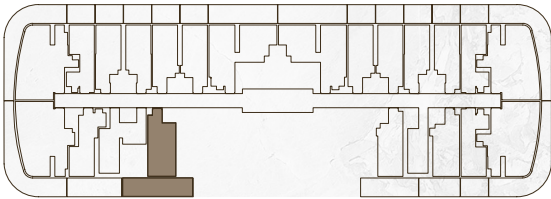
AREA	SQ.M	SQ.FT
SUITE AREA	31.61 m²	340 ft²
BALCONY AREA	10.00 m²	108 ft²
TOTAL UNIT AREA	41.61 m²	448 ft²

FLAT DESIGN COMPONENTS		
BATH	4 m²	
STUDIO	16 m²	
KITCHEN	7 m²	



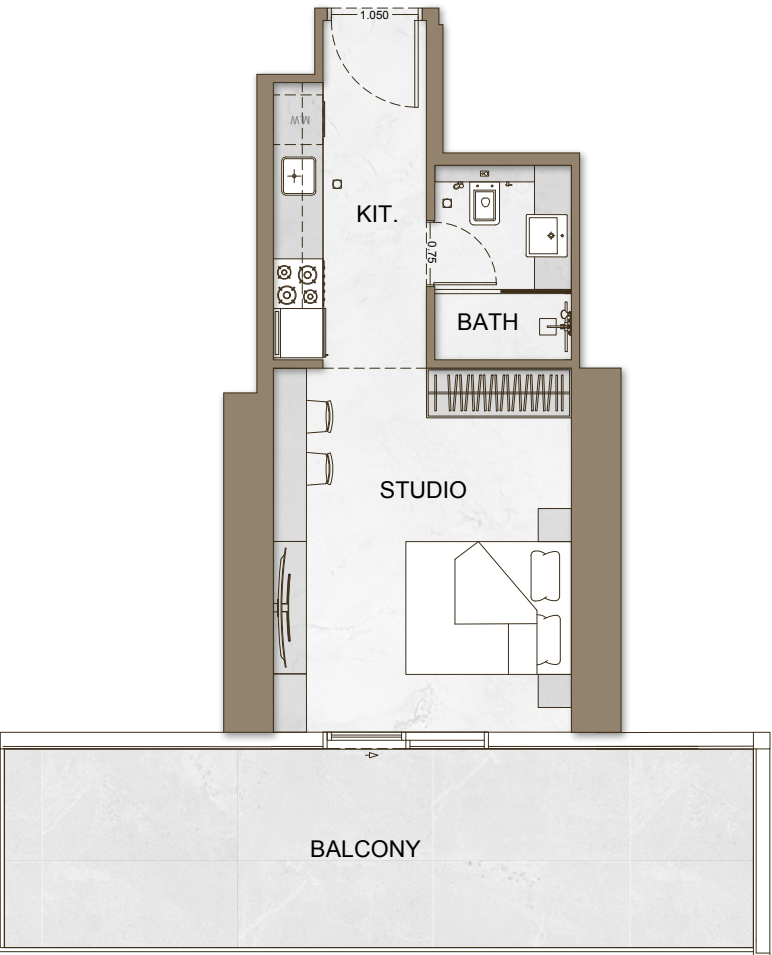
STUDIO

TYPE - 10



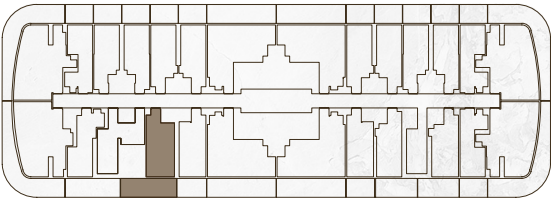
AREA	SQ.M	SQ.FT
SUITE AREA	31.61 m²	340 ft²
BALCONY AREA	22.55 m²	243 ft²
TOTAL UNIT AREA	54.16 m²	583 ft²

FLAT DESIGN COMPONENTS		
MASTER BATH	4 m²	
MASTER BEDROOM	16 m²	
LIVING & DINING	7 m²	



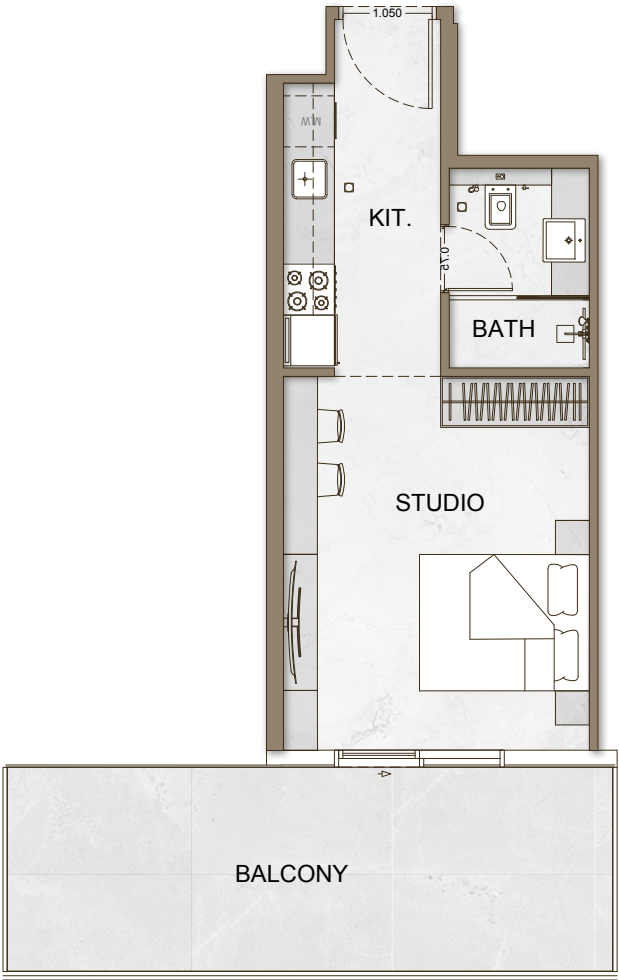
STUDIO

TYPE - 11



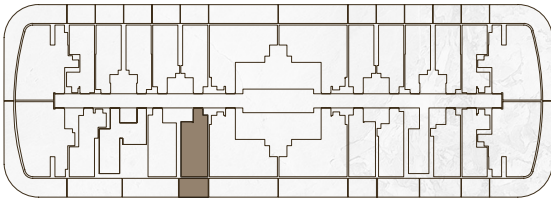
AREA	SQ.M	SQ.FT
SUITE AREA	31.61 m²	340 ft²
BALCONY AREA	18.97 m²	204 ft²
TOTAL UNIT AREA	50.58 m²	544 ft²

FLAT DESIGN COMPONENTS		
BATH	4 m²	
STUDIO	16 m²	
KITCHEN	7 m²	



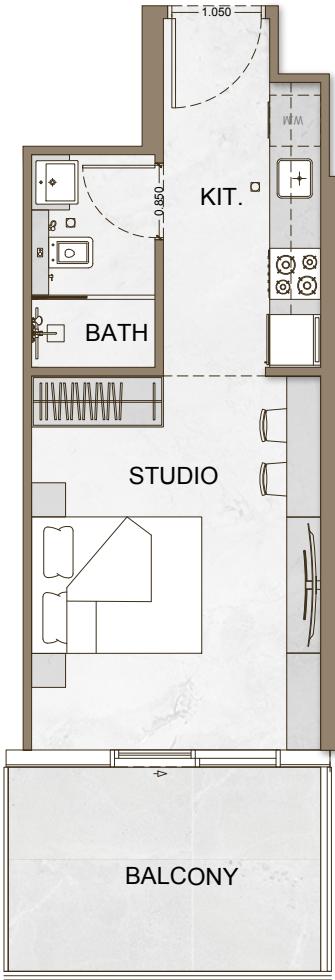
STUDIO

TYPE - 12



AREA	SQ.M	SQ.FT
SUITE AREA	29.49 m²	317 ft²
BALCONY AREA	9.50 m²	102 ft²
TOTAL UNIT AREA	38.99 m²	420 ft²

FLAT DESIGN COMPONENTS		
MASTER BATH	4 m²	
MASTER BEDROOM	15 m²	
LIVING & DINING	7 m²	



Live Within a Vision

Skyhall is more than just a place to live; it's a place to embody your aspirations. Embrace a life of unparalleled comfort and convenience, where every detail is designed to inspire and empower.



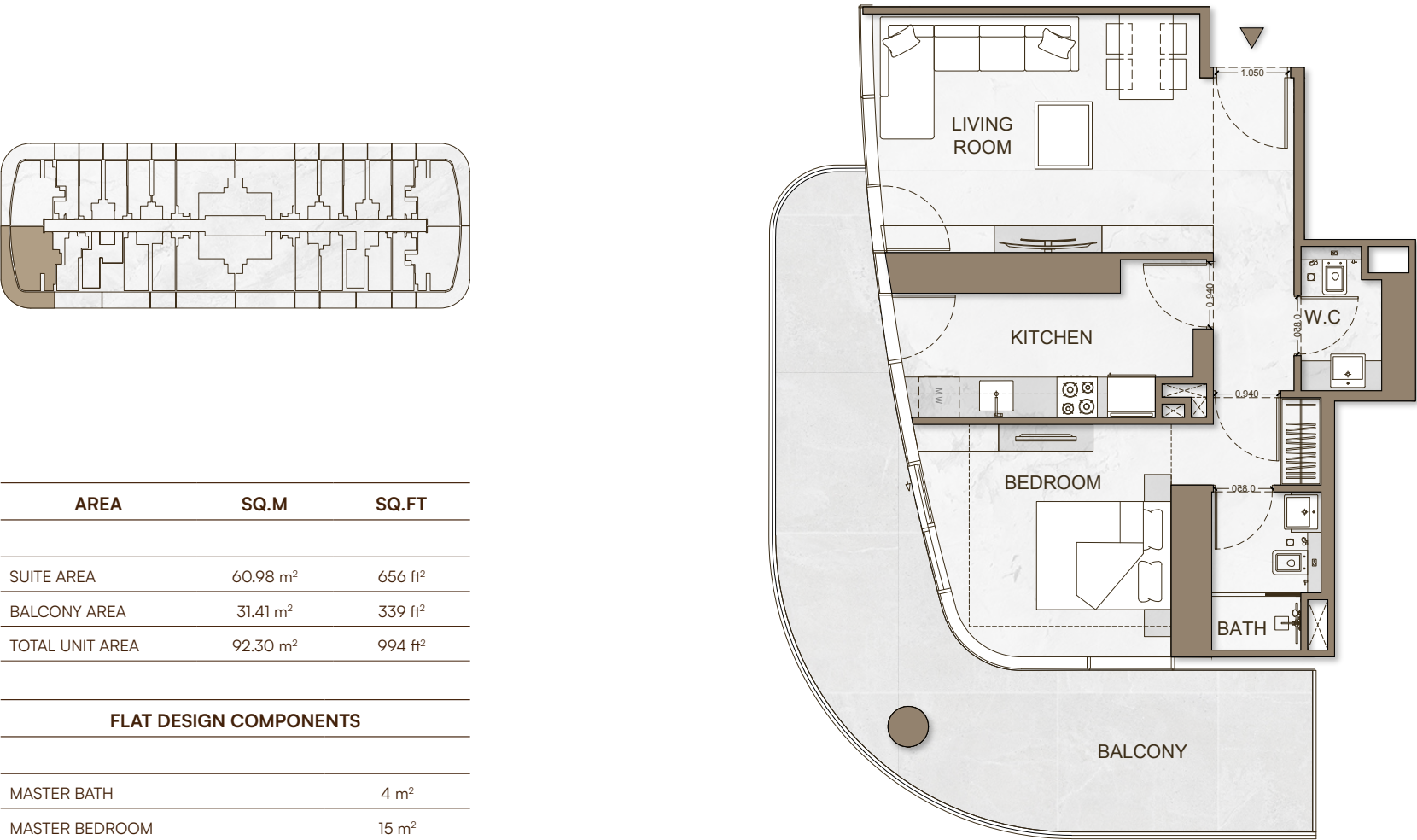
Where Aspirations Meet Ascendantly

To those who seek more. To those who dare
above and beyond. To all of them - exist
within a vision.



1 BEDROOM

TYPE - 1

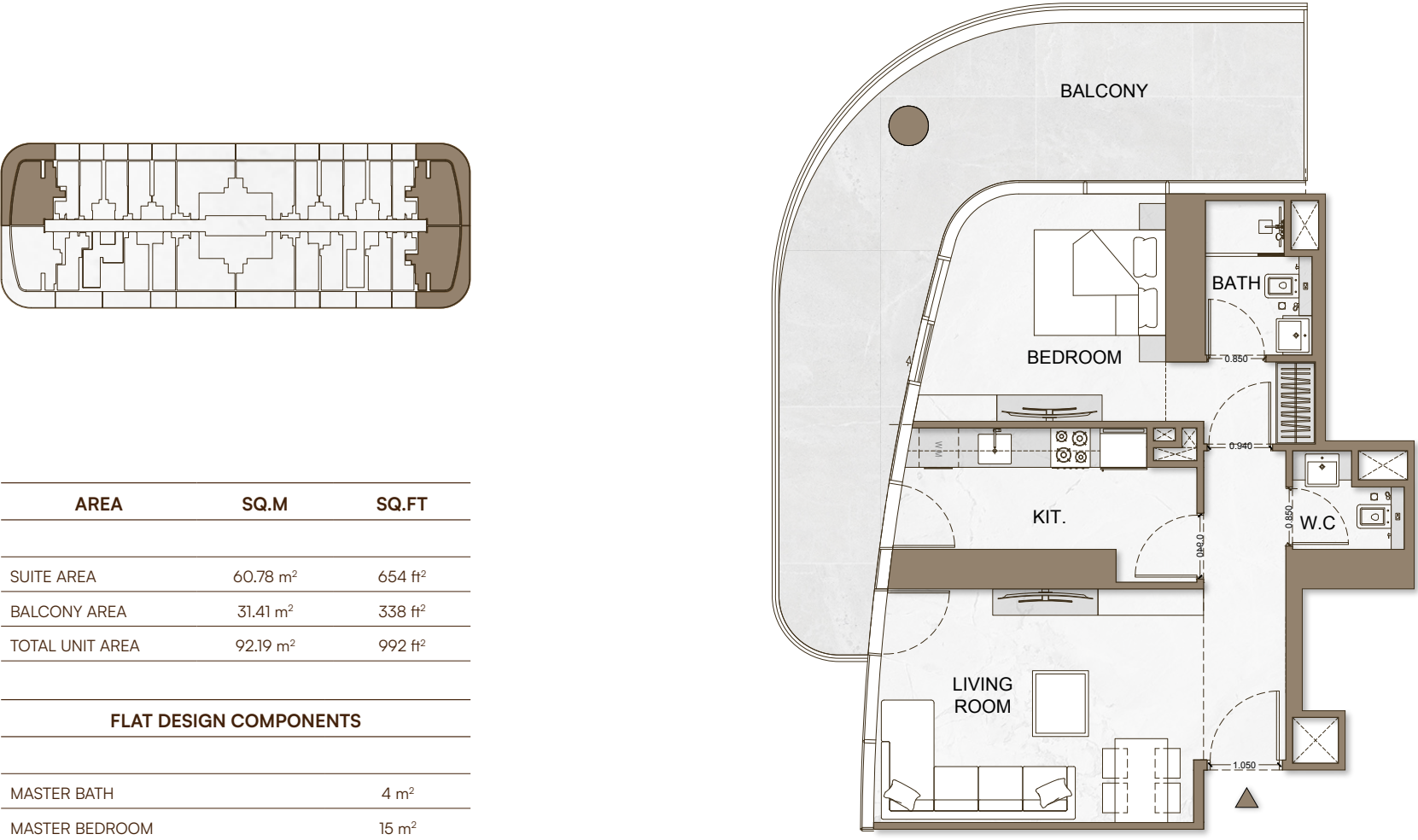


AREA	SQ.M	SQ.FT
SUITE AREA	60.98 m²	656 ft²
BALCONY AREA	31.41 m²	339 ft²
TOTAL UNIT AREA	92.30 m²	994 ft²

FLAT DESIGN COMPONENTS		
MASTER BATH		4 m²
MASTER BEDROOM		15 m²
LIVING & DINING		18 m²
KITCHEN		9 m²
W.C		3 m²
CORRIDOR		6 m²

1 BEDROOM

TYPE - 2



AREA	SQ.M	SQ.FT
SUITE AREA	60.78 m²	654 ft²
BALCONY AREA	31.41 m²	338 ft²
TOTAL UNIT AREA	92.19 m²	992 ft²

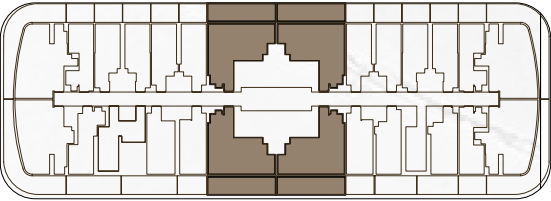
FLAT DESIGN COMPONENTS		
MASTER BATH		4 m²
MASTER BEDROOM		15 m²
LIVING & DINING		17 m²
KITCHEN		9 m²
W.C		2 m²
CORRIDOR		6 m²

Disclaimer: 1. All stated dimensions and services whether in relation to the building, common areas or individual units are subject to government and local authority approvals. Final dimensions and services will be stated in your sales and purchase agreement 2. All room dimensions are measured to structural elements and exclude wall finishes and construction tolerances. 3. All dimensions have been provided by our consultant architects. 4. All materials, dimensions and drawings are approximate. Information is subject to change without notice. 5. Actual suite area may vary from the stated area. Drawings are not to scale. The Developer reserves the right to make any revisions whatsoever including for aesthetic purposes.

6. Calculation of suite area is measured as the area bounded by the centre line of demising or partition walls separating one unit from another unit, the exterior face of all exterior walls, and the exterior face of the corridor wall enclosing the adjoining unit. 7. Calculation of balcony area is measured as the area bounded by the centre line of demising or partition walls separating one unit from another unit, the outmost face of the enclosing guard and the external face of the adjoining balcony. 8. The units are measured at typical floor in the building. Columns may vary in size depending on the floor level. 9. For each unit type, unit sizes and details might be different and your sales and purchase agreement will contain the actual size of each specific unit.

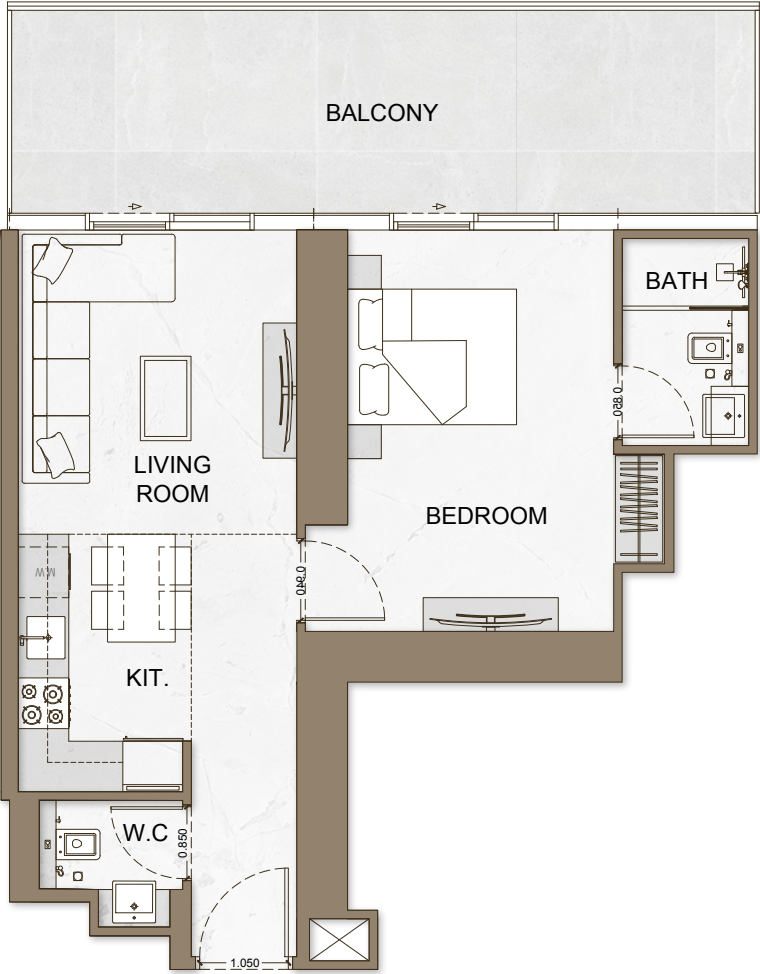
1 BEDROOM

TYPE - 3



AREA	SQ.M	SQ.FT
SUITE AREA	54.22 m²	584 ft²
BALCONY AREA	22.46 m²	242 ft²
TOTAL UNIT AREA	76.68 m²	825 ft²

FLAT DESIGN COMPONENTS		
MASTER BATH		4 m²
MASTER BEDROOM		16 m²
LIVING & DINING		12 m²
KITCHEN		6 m²
W.C		2 m²
CORRIDOR		6 m²



Disclaimer: 1. All stated dimensions and services whether in relation to the building, common areas or individual units are subject to government and local authority approvals. Final dimensions and services will be stated in your sales and purchase agreement 2. All room dimensions are measured to structural elements and exclude wall finishes and construction tolerances. 3. All dimensions have been provided by our consultant architects. 4. All materials, dimensions and drawings are approximate. Information is subject to change without notice. 5. Actual suite area may vary from the stated area. Drawings are not to scale. The Developer reserves the right to make any revisions whatsoever including for aesthetic purposes.

6. Calculation of suite area is measured as the area bounded by the centre line of demising or partition walls separating one unit from another unit, the exterior face of all exterior walls, and the exterior face of the corridor wall enclosing the adjoining unit. 7. Calculation of balcony area is measured as the area bounded by the centre line of demising or partition walls separating one unit from another unit, the outmost face of the enclosing guard and the external face of the adjoining balcony. 8. The units are measured at typical floor in the building. Columns may vary in size depending on the floor level. 9. For each unit type, unit sizes and details might be different and your sales and purchase agreement will contain the actual size of each specific unit.



Discover a range of thoughtfully designed retail floor plans to meet the unique needs of your business. From boutique spaces to larger storefronts, Skyhall offers a space for every discerning retailer.

Retail Floor Plans

RETAIL UNIT 01



Disclaimer: 1. All stated dimensions and services whether in relation to the building, common areas or individual units are subject to government and local authority approvals. Final dimensions and services will be stated in your sales and purchase agreement 2. All room dimensions are measured to structural elements and exclude wall finishes and construction tolerances. 3. All dimensions have been provided by our consultant architects. 4. All materials, dimensions and drawings are approximate. Information is subject to change without notice. 5. Actual suite area may vary from the stated area. Drawings are not to scale. The Developer reserves the right to make any revisions whatsoever including for aesthetic purposes.

RETAIL UNIT 02



6. Calculation of suite area is measured as the area bounded by the centre line of demising or partition walls separating one unit from another unit, the exterior face of all exterior walls, and the exterior face of the corridor wall enclosing the adjoining unit. 7. Calculation of balcony area is measured as the area bounded by the centre line of demising or partition walls separating one unit from another unit, the outmost face of the enclosing guard and the external face of the adjoining balcony. 8. The units are measured at typical floor in the building. Columns may vary in size depending on the floor level. 9. For each unit type, unit sizes and details might be different and your sales and purchase agreement will contain the actual size of each specific unit.

RETAIL UNIT 03



Disclaimer: 1. All stated dimensions and services whether in relation to the building, common areas or individual units are subject to government and local authority approvals. Final dimensions and services will be stated in your sales and purchase agreement 2. All room dimensions are measured to structural elements and exclude wall finishes and construction tolerances. 3. All dimensions have been provided by our consultant architects. 4. All materials, dimensions and drawings are approximate. Information is subject to change without notice. 5. Actual suite area may vary from the stated area. Drawings are not to scale. The Developer reserves the right to make any revisions whatsoever including for aesthetic purposes.

RETAIL UNIT 04



6. Calculation of suite area is measured as the area bounded by the centre line of demising or partition walls separating one unit from another unit, the exterior face of all exterior walls, and the exterior face of the corridor wall enclosing the adjoining unit. 7. Calculation of balcony area is measured as the area bounded by the centre line of demising or partition walls separating one unit from another unit, the outmost face of the enclosing guard and the external face of the adjoining balcony. 8. The units are measured at typical floor in the building. Columns may vary in size depending on the floor level. 9. For each unit type, unit sizes and details might be different and your sales and purchase agreement will contain the actual size of each specific unit.

RETAIL UNIT 05



Disclaimer: 1. All stated dimensions and services whether in relation to the building, common areas or individual units are subject to government and local authority approvals. Final dimensions and services will be stated in your sales and purchase agreement 2. All room dimensions are measured to structural elements and exclude wall finishes and construction tolerances. 3. All dimensions have been provided by our consultant architects. 4. All materials, dimensions and drawings are approximate. Information is subject to change without notice. 5. Actual suite area may vary from the stated area. Drawings are not to scale. The Developer reserves the right to make any revisions whatsoever including for aesthetic purposes.

RETAIL UNIT 06



6. Calculation of suite area is measured as the area bounded by the centre line of demising or partition walls separating one unit from another unit, the exterior face of all exterior walls, and the exterior face of the corridor wall enclosing the adjoining unit. 7. Calculation of balcony area is measured as the area bounded by the centre line of demising or partition walls separating one unit from another unit, the outmost face of the enclosing guard and the external face of the adjoining balcony. 8. The units are measured at typical floor in the building. Columns may vary in size depending on the floor level. 9. For each unit type, unit sizes and details might be different and your sales and purchase agreement will contain the actual size of each specific unit.

RETAIL UNIT 07



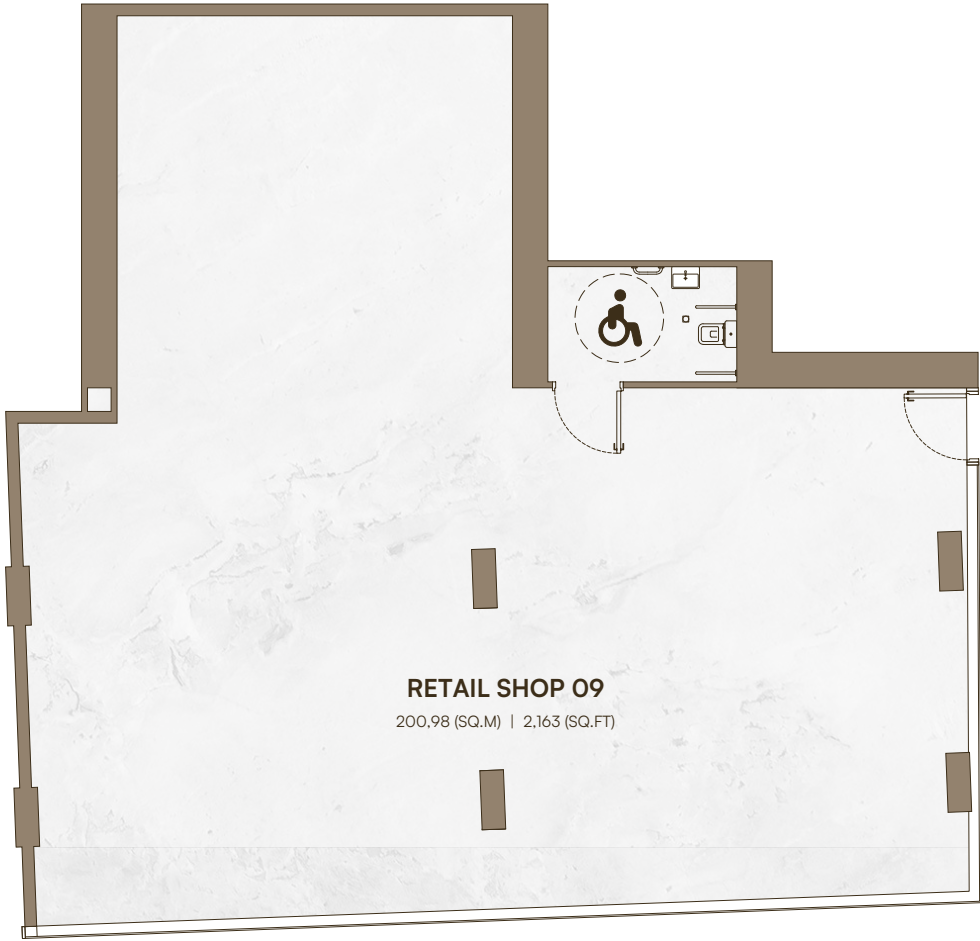
Disclaimer: 1. All stated dimensions and services whether in relation to the building, common areas or individual units are subject to government and local authority approvals. Final dimensions and services will be stated in your sales and purchase agreement 2. All room dimensions are measured to structural elements and exclude wall finishes and construction tolerances. 3. All dimensions have been provided by our consultant architects. 4. All materials, dimensions and drawings are approximate. Information is subject to change without notice. 5. Actual suite area may vary from the stated area. Drawings are not to scale. The Developer reserves the right to make any revisions whatsoever including for aesthetic purposes.

RETAIL UNIT 08



6. Calculation of suite area is measured as the area bounded by the centre line of demising or partition walls separating one unit from another unit, the exterior face of all exterior walls, and the exterior face of the corridor wall enclosing the adjoining unit. 7. Calculation of balcony area is measured as the area bounded by the centre line of demising or partition walls separating one unit from another unit, the outmost face of the enclosing guard and the external face of the adjoining balcony. 8. The units are measured at typical floor in the building. Columns may vary in size depending on the floor level. 9. For each unit type, unit sizes and details might be different and your sales and purchase agreement will contain the actual size of each specific unit.

RETAIL UNIT 09



Disclaimer: 1. All stated dimensions and services whether in relation to the building, common areas or individual units are subject to government and local authority approvals. Final dimensions and services will be stated in your sales and purchase agreement 2. All room dimensions are measured to structural elements and exclude wall finishes and construction tolerances. 3. All dimensions have been provided by our consultant architects. 4. All materials, dimensions and drawings are approximate. Information is subject to change without notice. 5. Actual suite area may vary from the stated area. Drawings are not to scale. The Developer reserves the right to make any revisions whatsoever including for aesthetic purposes.

RETAIL UNIT 10



6. Calculation of suite area is measured as the area bounded by the centre line of demising or partition walls separating one unit from another unit, the exterior face of all exterior walls, and the exterior face of the corridor wall enclosing the adjoining unit. 7. Calculation of balcony area is measured as the area bounded by the centre line of demising or partition walls separating one unit from another unit, the outmost face of the enclosing guard and the external face of the adjoining balcony. 8. The units are measured at typical floor in the building. Columns may vary in size depending on the floor level. 9. For each unit type, unit sizes and details might be different and your sales and purchase agreement will contain the actual size of each specific unit.

RETAIL UNIT 11



Disclaimer: 1. All stated dimensions and services whether in relation to the building, common areas or individual units are subject to government and local authority approvals. Final dimensions and services will be stated in your sales and purchase agreement 2. All room dimensions are measured to structural elements and exclude wall finishes and construction tolerances. 3. All dimensions have been provided by our consultant architects. 4. All materials, dimensions and drawings are approximate. Information is subject to change without notice. 5. Actual suite area may vary from the stated area. Drawings are not to scale. The Developer reserves the right to make any revisions whatsoever including for aesthetic purposes.

6. Calculation of suite area is measured as the area bounded by the centre line of demising or partition walls separating one unit from another unit, the exterior face of all exterior walls, and the exterior face of the corridor wall enclosing the adjoining unit. 7. Calculation of balcony area is measured as the area bounded by the centre line of demising or partition walls separating one unit from another unit, the outmost face of the enclosing guard and the external face of the adjoining balcony. 8. The units are measured at typical floor in the building. Columns may vary in size depending on the floor level. 9. For each unit type, unit sizes and details might be different and your sales and purchase agreement will contain the actual size of each specific unit.

